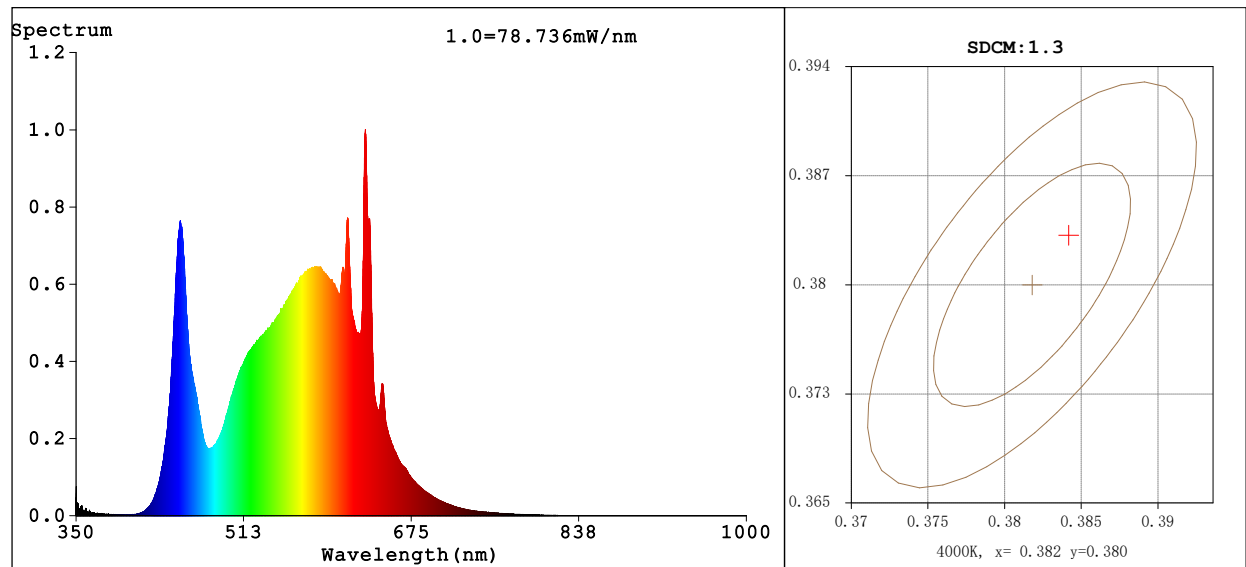


Spectrum Test Report



Color Parameters:

Chromaticity Coordinate: $x=0.3842$ $y=0.3829$ $u'=0.2251$ $v'=0.5048$
CCT=3946K (Duv=0.0018) Dominant WL:Ld =578.4nm WL:Lc = --nm Purity=30.2%
Ratio:R=18.4% G=78.2% B=3.4% Peak WL:Lp=630.6nm FWHM=10.2nm
Render Index:Ra=82.4 AvgR=75.5 TM30:Rf=83 Rg=95

R1 =80 R2 =88 R3 =94 R4 =81 R5 =80 R6 =83 R7 =87
R8 =66 R9 =11 R10=71 R11=79 R12=58 R13=82 R14=97 R15=75

Photo Parameters:

Flux = 2992 lm Eff. : 106.28 lm/W Fe = 8.669 W

Electrical parameters:

V = 231.39 V I = 0.1282 A P = 28.15 W PF = 0.9493

Kdisp(IEC) = 0.9545

LEVEL:OUT WHITE:ANSI_4000K

Status: Integral T = 66 ms Ip = 35525 (54%)

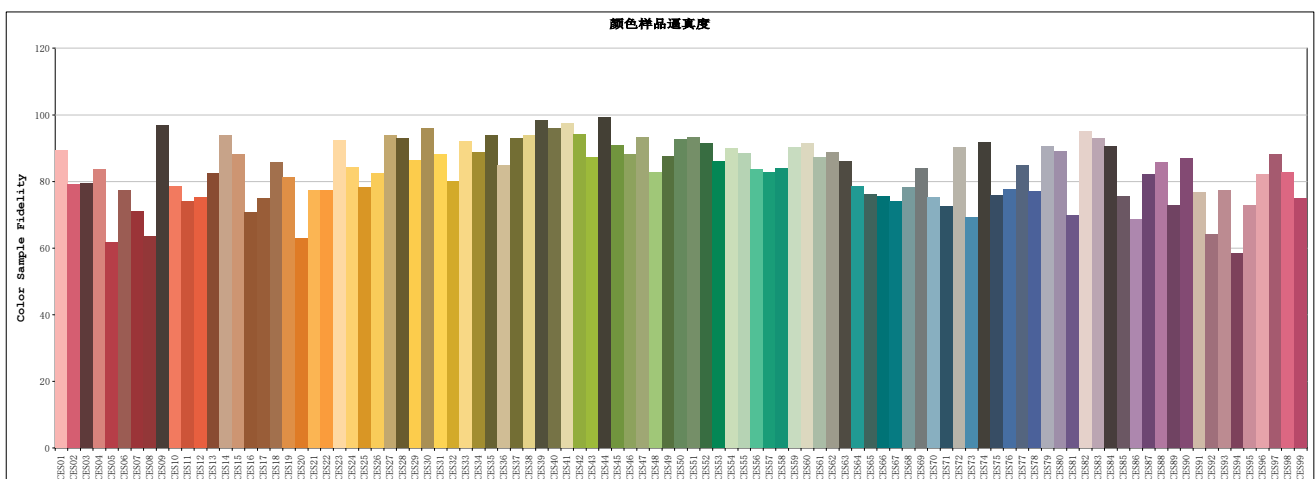
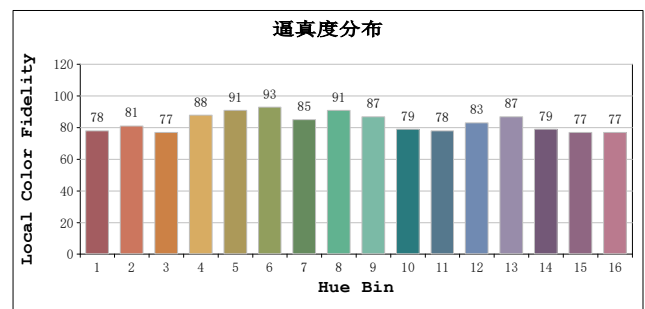
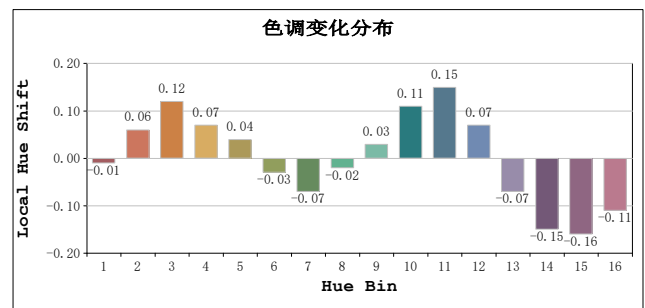
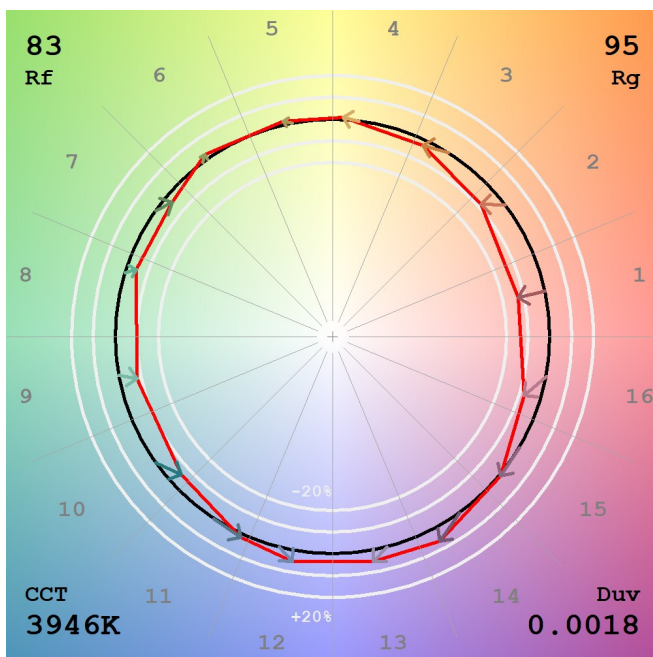
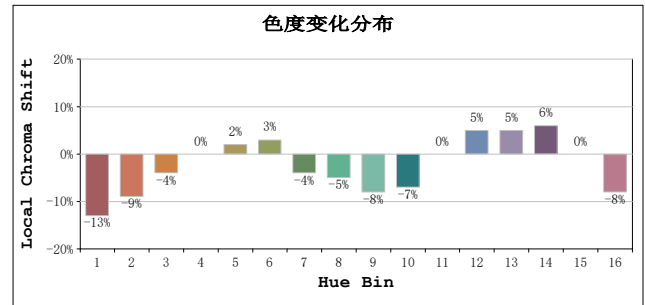
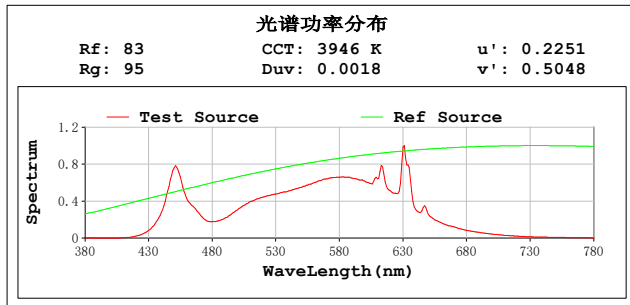
GBT5702

Model:
Tester:
Temperature:25.3Deg
Manufacturer:

Number:197
Date:2026-01-18 08:47:25
Humidity:65.0%
Remarks:

TM30

视场角:2 度



Model:
Tester:
Temperature:25.3Deg
Manufacturer:

Number:197
Date:2026-01-18 08:47:25
Humidity:65.0%
Remarks: